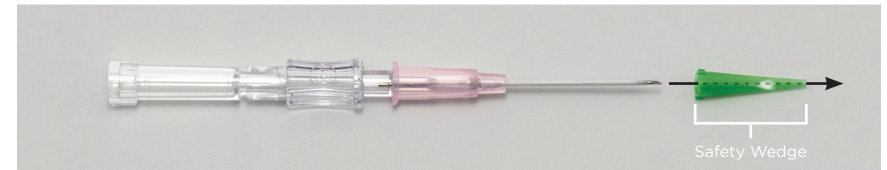


Fiber Optic Lighting Kit Instructions

Intubation Tube Safety Wedges

The Intubation Tube Safety Wedge is designed to facilitate the insertion of the catheter into the trachea and minimize the chance of inserting the cannula too deeply. During intubation, the wedge will guide the catheter tip to the proper location between the larynx and carina. Once placed, the tight fit ensures bilateral ventilation and reduces air leaks from around the catheter.

1. Remove a catheter and needle from the packaging.
2. Attach the Safety Wedge by inserting the catheter and needle through the wedge. Ensure that the wedge is tightly secured onto the catheter hub.



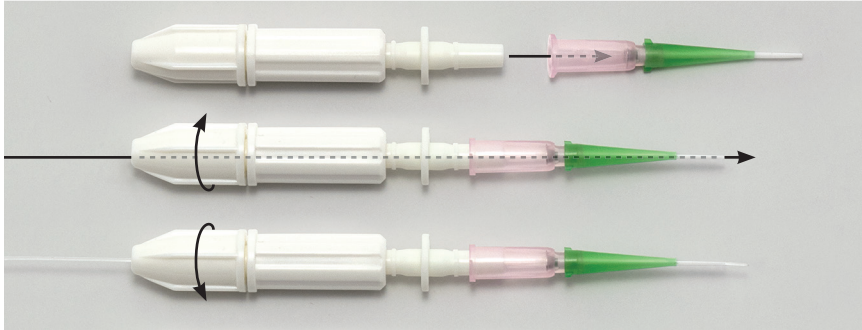
Note: Included catheter may differ from shown.

Note: To avoid damaging the catheter, attach the wedge before removing the needle.

Assembly Option A: Using the Fiber Optic Guide Wire

1. Secure the catheter onto the handle by pressing the hub of the catheter lightly onto the tip of the handle.
2. Rotate the collar on the handle to loosen it.
3. Insert the fiber optic cable through the catheter until the cable extends 3-5 mm past the end of the tip of the catheter.

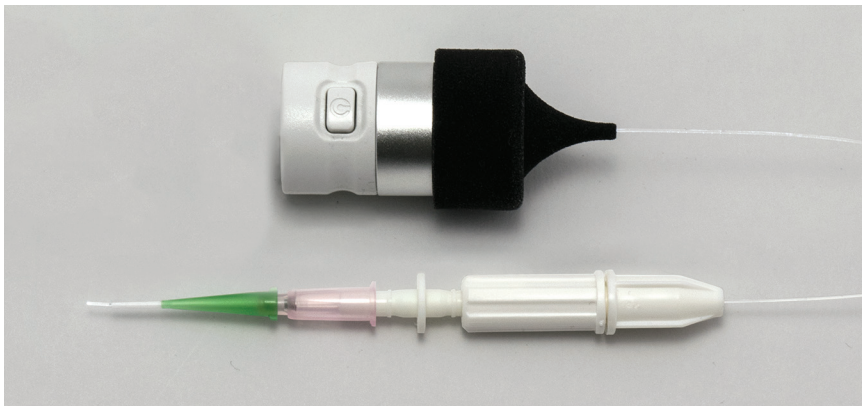
4. Rotate the collar on the handle to secure the positioning of the fiber optic cable.



5. Power on the light source by pressing the power button and attach the black fiber optic connector. The intensity of the light can be adjusted by repeatedly pressing the power button.

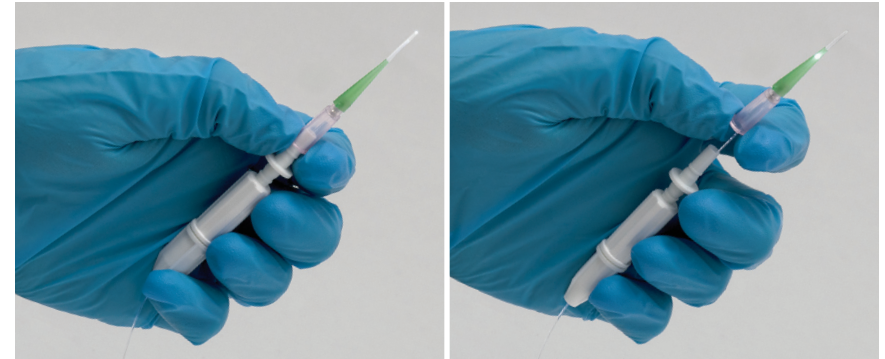
The black fiber optic connector is compatible with the included USB light source and spotlight included as part of the optional Lighting and Magnification Kit sold with the SurgiSuite Surgical Platform.

The tip of the fiber optic will illuminate, allowing for easy visualization of tracheal opening.



6. Using the included dental spatula, gently maneuver the animal's tongue to the side until the tracheal opening can be viewed.
7. Intubate the animal, using the fiber optic as a guide. Insert the fiber optic cable until the catheter tip passes through the oropharynx.

8. Gently detach the catheter from the handle using the thumb and forefinger of one hand as shown while the other hand supports the animal to maintain the catheter's position in the trachea.



9. Secure the positioning of the catheter if necessary.

Tips:

- The use of the intubation stand designed specifically for rodents will assist in straightening the trachea for viewing and easy intubation.
- Spraying the catheter and guide wire with 2% Lidocaine can be helpful to prevent laryngospasm, allowing the user to more easily pass the catheter into the trachea.
- Refer to your institution's regulations regarding repeated intubation.

Care and Maintenance:

- Handle the fiber optic cable with care to avoid bending the fiber.
- Catheters and Safety Wedges are disposable and intended for single use only.
- If desired, intubation tubes and safety wedges can be disinfected with 70% ethanol prior to use.
- The handle, adapters, and fiber optic guide wire can be cleaned between uses with isopropyl alcohol.